

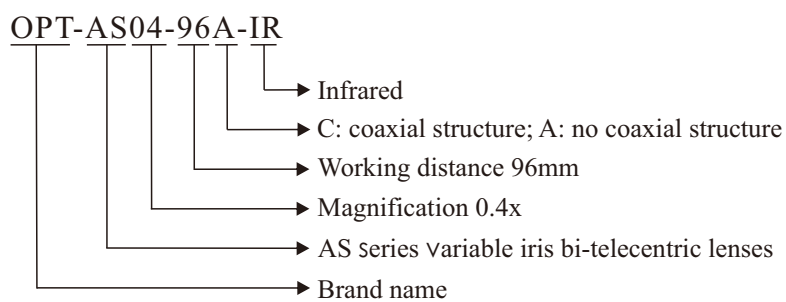
# AS Series Variable Iris Bi-telecentric Lenses



## Product Features

- 1 Equipped with a variable iris to balance depth of field and resolution
- 2 Designed for high accuracy measurement tasks
- 3 Excellent image resolution
- 4 Max compatible to industrial cameras with 2/3" sensor
- 5 Bi-telecentric design
- 6 Available for customization

## Selection Guide



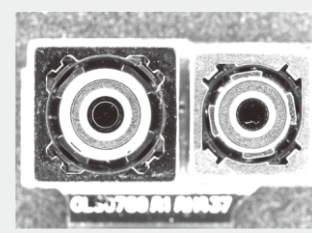
## Application Examples



Mobile phone back cover inspection



OCR for socket



Scratches inspection for camera module

### Model Table

No.	Model	WD (mm) [1]	Mag. (x)	Image circle (Ømm)	Aperture (F#) [2]	Distortion (% Max)	DOF (mm) [3]	Mount	Weight (kg)	FOV (mm x mm)			
										1/3"	1/2.5"	1/2"	2/3"
1	OPT-AS05-65A	65±1	0.500	11	5.0	0.1	1.65	C	0.17	9.6×7.2	11.4×8.4	13×9.8	16.8×14.2
2	OPT-AS05-65C	65±1	0.500	11	5.0	0.1	1.65	C	0.18	9.6×7.2	11.4×8.4	13×9.8	16.8×14.2
3	OPT-AS04-96A	96±2	0.400	11	10.7	0.1	5.52	C	0.17	12×9	14.3×10.5	16.3×12.3	21×17.8
4	OPT-AS04-96A-IR	96±2	0.400	11	5.0	0.1	2.58	C	0.16	12×9	14.3×10.5	16.3×12.3	21×17.8
5	OPT-AS03-110A	110±2	0.300	11	3.75	0.1	3.44	C	0.38	16×12	19×14	21.7×16.3	28×23.7
6	OPT-AS03-110C	110±2	0.300	11	3.75	0.1	3.44	C	0.34	16×12	19×14	21.7×16.3	28×23.7
7	OPT-AS0166-166A	166±3	0.166	11	3.3	0.1	9.88	C	0.61	28.9×21.7	34.3×25.3	39.2×29.5	50.6×42.8

**Remarks:**

- Working distance, the distance between the front end of the mechanics and the object.
- The real F# of a lens when using. Lenses with smaller apertures can be workable.
- At the borders of the DOF the image still can be used for measurement. But only half of the nominal DOF can get sharp images.

### Dimensional Drawings [mm]

